

Loss Reduction with Optimization of Capacitor Placement in Radial Distribution Using Genetic Algorithm and Comparison with ABC Method - A CASE STUDY

Ehsan Rostami Salari, Behnam Jomehzadeh Mahani, Behrooz Jomehzadeh Mahani, Mahdiyeh Eslami

Abstract- Increasing application of capacitor banks on distribution networks is the direct impact of development of technology and the energy disasters that the world is encountering. To obtain these goals the resources capacity and the installation place are of a crucial importance. In this paper a new method is proposed to find the optimal and simultaneous place and capacity of these resources to reduce losses, improve voltage profile Using Genetic Algorithm and Comparison with ABC Method. The advantage of ABC algorithm is that it does not require external parameters such as cross over rate and mutation rate as in case of genetic algorithm and differential evolution and it is hard to determine these parameters in prior. To demonstrate the validity of the proposed algorithm, computer simulations are carried out on actual power network of Kerman Province, Iran and the simulation results are presented and discussed.

Keywords: Distribution systems, Loss Sensitivity Factors, Capacitor placement, Artificial Bee Colony Algorithm

1. Introduction

The loss minimization in distribution systems has assumed greater significance recently since the trend towards distribution automation will require the most efficient operating scenario for economic viability variations. The power losses in distribution systems correspond to about 70% of total losses in electric power systems (2005). To reduce these losses, shunt capacitor banks are installed on distribution primary feeders. The advantages with the addition of shunt capacitors banks are to improve the power factor, feeder voltage profile, Power loss reduction and increases available capacity of feeders. Therefore it is important to find optimal location and sizes of capacitors in the system to achieve the above mentioned objectives. Since, the optimal capacitor placement is a complicated combinatorial optimization problem, many different optimization techniques and algorithms have been proposed in the past. H. Ng et al (2000) proposed the capacitor placement problem by using fuzzy approximate reasoning. Sundharajan and Pahwa (1994) proposed the genetic algorithm approach to determine the optimal placement of capacitors based on the mechanism of

natural selection. Ji-Pyng Chiou et al (2006) proposed the variable scale hybrid differential evolution algorithm for the capacitor placement in distribution system. Both Grainger et al (1981) and Baghzouz and Ertem (1990) proposed the concept that the size of capacitor banks was considered as a continuous variable. Bala et al (1995) presented a sensitivity-based method to solve the optimal capacitor placement problem.

In this paper a new method is proposed to find the optimal and simultaneous place and capacity of these resources to reduce losses, improve voltage profile. The artificial bee colony algorithm is a new meta heuristic approach, proposed by Karaboga [9]-[11]. It is inspired by the intelligent foraging behavior of honey bee swarm. The proposed method is tested on actual power network of Kerman Province, Iran and the simulation results are presented and discussed.

2. Objective function

The objective of capacitor placement in the distribution system is to minimize the annual cost of the system, subjected to certain operating constraints and load pattern. For simplicity, the operation and maintenance cost of the capacitor placed in the distribution system is not taken into consideration. The three-phase system is considered as balanced and loads are assumed as time invariant. Mathematically, the objective function of the problem is described as:

$$\text{Minimize } f = \text{Min} (\text{COST} + \lambda \Delta v_{\min}^2) \quad (1)$$

Where COST includes the cost of power loss and the capacitor placement, and will be discussed further later. λ is a penalty function and $(\Delta V^2)_{\min}$ is the squared

Ehsan Rostami Salari, Department of Electrical Engineering Science and Research Branch, Islamic Azad University, Kerman, Iran (E-mail: Ers1369@gmail.com).

Behnam Jomehzadeh Mahani, Department of Electrical Engineering Science and Research Branch, Islamic Azad University, Kerman, Iran (E-mail: b.jomehzadeh@gmail.com).

Behrooz Jomehzadeh Mahani, Department of Electrical Engineering Science and Research Branch, Islamic Azad University, Kerman, Iran (E-mail: Behrooz.jomehzadeh@gmail.com).

Mahdiyeh Eslami, Department of Electrical Engineering Science and Research Branch, Islamic Azad University, Kerman, Iran (E-mail: M_eslami@srbiau.ac.ir).

sum of the violated voltage constraint. Moreover, the penalty function satisfies the following properties:

- (1) If the voltage constraint is not violated, $\lambda = 0$;
- (2) If the constraint is violated, a significant penalty is imposed to cause the objective function to move away from the undesirable solution.

The voltage magnitude at each bus must be maintained within its limits and is expressed as:

$$V_{min} \leq |V_i| \leq V_{max} \quad (2)$$

Where $|V_i|$ is the voltage magnitude of bus i , V_{min} and V_{max} are bus minimum and maximum voltage limits, respectively.

3. Formulation

The power flows are computed by the following set of simplified recursive equations derived from the single-line diagram depicted in Fig. 1.

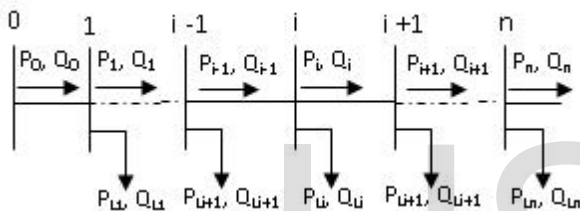


Figure 1: Single line diagram of main feeder

$$P_{i+1} = P_i - P_{Li+1} - R_{ij+1} \frac{P_i^2 + Q_i^2}{|V_i|^2} \quad (3)$$

$$Q_{i+1} = Q_i - Q_{Li+1} - X_{ij+1} \frac{P_i^2 + Q_i^2}{|V_i|^2} \quad (4)$$

$$|V_i|^2 = |V_0|^2 - 2(R_{ij+1} P_i + X_{ij+1} Q_i) + (R_{ij+1}^2 + X_{ij+1}^2) \times \frac{P_i^2 + Q_i^2}{|V_i|^2} \quad (5)$$

Where P_i and Q_i are the real and reactive powers flowing out of bus i , and P_{Li} and Q_{Li} are the real and reactive load powers at bus i . The total power loss of the feeder, P_T^{LOSS} may then be determined by summing up the losses of all line sections of the feeder, which is given as

$$P_T^{LOSS} = \sum_{i=0}^{n-1} P_{LOSS}(i, i+1) \quad (6)$$

Considering the practical capacitors, there exists a finite number of standard sizes which are integer multiples of the smallest size Q_0 . Besides, the cost per Kvar varies from one size to another. In general, capacitors of larger size have lower unit prices. The bus reactive compensation power is limited to

$$Q_i^c \leq \sum_{i=1}^n Q_{Li} \quad (7)$$

Where $1Q_c$ and LQ_c are the reactive power compensated at bus i and the reactive load power at bus i , respectively.

4. Power Flow Analysis Method

The Backward Sweep calculates the current injected into each branch as a function of the end node voltages. It performs a current summation while updating voltages. Bus voltages at the end nodes are initialized for the first iteration. Starting at the end buses, each branch is traversed toward the source bus updating the voltage and calculating the current injected into each bus. The calculated source voltage is used for mismatch calculation as the termination criteria by comparing it to the specified source voltage. The Forward Sweep calculates node voltages as a function of the currents injected into each bus. The Forward Sweep is a voltage drop calculation with the constraint that the source voltage used is the specified nominal voltage at the beginning of each forward sweep. [12].

5. Artificial Bee Colony Algorithm (ABC)

Artificial Bee Colony (ABC) algorithm, proposed by Karaboga for optimizing numerical problems in [6], simulates the intelligent foraging behavior of honey bee swarms. In ABC algorithm, the colony of artificial bees contains three groups of bees: employed bees, and unemployed bees: onlookers and scouts. In ABC, first half of the colony consists of employed artificial bees and the second half constitutes the artificial onlookers. The employed bee whose food source has been exhausted becomes a scout bee. In ABC algorithm, the position of a food source represents a possible solution to the optimization problem and the nectar amount of a food source corresponds to the quality (fitness) of the associated solution. The number of the employed bees is equal to the number of food sources, each of which also represents a site, being exploited at the moment or to the number of solutions in the population.

In the ABC algorithm, first half of the colony consists of employed artificial bees and the second half constitutes the onlookers. For every food source, there is only one employed bee. In the ABC algorithm, each cycle of the search consists of three steps: sending the employed bees onto the food sources and then measuring their nectar amounts

Hence, the dance of employed bees carrying higher nectar recruits the onlookers for the food source areas with higher nectar amount. After arriving at the selected area, she chooses a new food source in the neighborhood of the one in the memory depending on visual information. Visual information is based on the comparison of food source positions. When the nectar of a food source is abandoned by the bees, a new food source is randomly determined by a scout bee and replaced with the abandoned one.

6. Test Results

To study the proposed method, actual power network of Kosar feeder of Kerman Province, Iran is simulated in Cymedist. Figure 3 illustrates the single-line diagram of this network. The base values of the system are taken as 20kV and 20MVA. The system consists of 20 distribution transformers with various ratings. The details of the distribution transformers are given in table 1. The details of the distribution conductors are given in table 2. The lengths of the feeder segments are given in table 3. The total connected load on the system is 2550 KVA and the peak demand for the year is 2120 KVA at a PF of 0.8 lag. The connected loads on the transformers are listed in table 4.

No load losses [watts]	150	250	480
Impedance [%]	4.5	4.5	4.5

Table 2: Details of conductors in the system

Type	R [Ω /km]	X [Ω /km]	Cmax [A]	A [mm ²]
Hyena	0.1576	0.2277	550	126
Dog	0.2712	0.2464	440	120
Mink	0.4545	0.2664	315	70

Table 3: Distribution System Line Data

from	To	Length (meters)
1	2	80
2	3	80
3	4	80
4	5	60
5	6	60
6	7	60
7	8	60
8	9	60
9	10	60
10	11	60
11	12	60
12	13	60
13	14	60
14	15	60
14	16	60
16	17	60
17	18	60
18	19	60
19	20	60

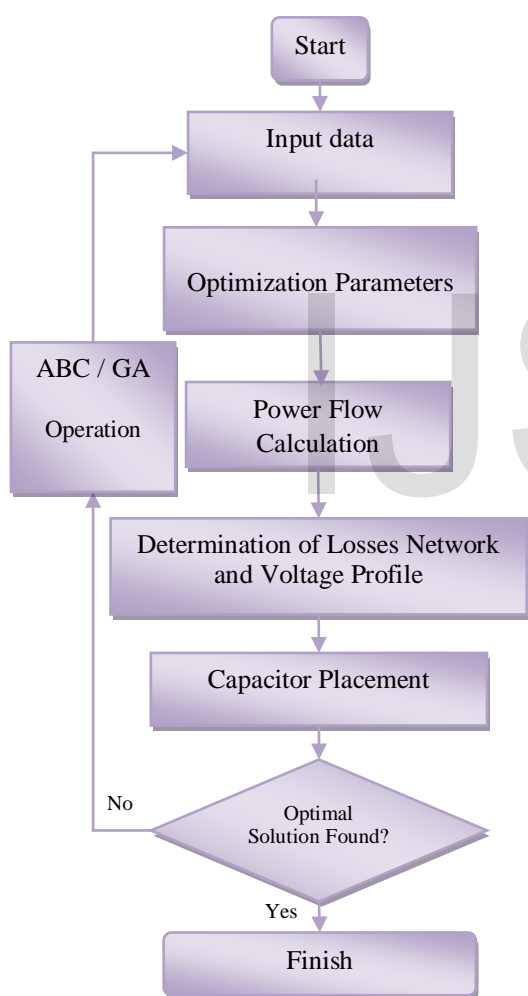


Figure 3: Flowchart of the proposed method

Table 1: Details of transformers in the system

Rating [KVA]	50	100	250
Number	5	9	6

Table 4: Details of the connected loads

Transformer no	Load [Kva]
1	35
2	245
3	85
4	165
5	50
6	85
7	180
8	35
9	35
10	90
11	85
12	75
13	200
14	73
15	35
16	85
17	98

18	230
19	220
20	85

In addition the total network loss, which was 10.05MW before installing capacitor, has diminished to the 4.55MW which shows 45.81% decrease. Table 5 depicts the Results of power flow before installation of capacitor. The simulation results are given in Table 6. These results reveal that the inclusions of capacitor reduce the line losses as expected. It can be shown from the graphs that, LRI decreases marginally, since the core losses of the transformers and the LV side losses remain constant being independent of the presence of v. It can also be seen that with the increase in the reactive power of capacitor, LRI, decrease. The detailed pu voltages profile of all the nodes of the system after capacitor placement are shown in the Figure 7.

Table 5: Results of power flow before installation of capacitor

Bus Number	V (pu)
1	1.0
2	0.9999
3	0.9998
4	0.9988
5	0.9988
6	0.9987
7	0.9985
8	0.9889
9	0.9879
10	0.9849
11	0.97
12	0.93
13	0.89

14	0.9849
15	0.9849
16	0.91
17	0.92
18	0.95
19	0.94
20	0.89

Table 7: Results of power flow after installation of capacitor banks

Bus Number	V (pu)
1	1.0
2	0.9999
3	0.9999
4	0.9999
5	0.9999
6	0.9988
7	0.9988
8	0.9888
9	0.9881
10	0.9885
11	0.99
12	0.97
13	0.91
14	0.988
15	0.988
16	0.95
17	0.96
18	0.98
19	0.95
20	0.93

Table 6: Variation of LRI and Optimal place and capacity of capacitor banks

Number	3	3	5	5	7	7
place	2,12,16	7,13,15	2,6,7,13,15	7,8,9,11,20	2,4,9,10,14,18,20	5,7,13,15,16,18,20
Picked capacity [Mvar]	0.02	0.02	0.575	0.35	2.25	2.1
Method	GA	ABC	GA	ABC	GA	ABC
LRI [%]	0.9296	0.8866	0.7627	0.6649	0.9754	0.7026

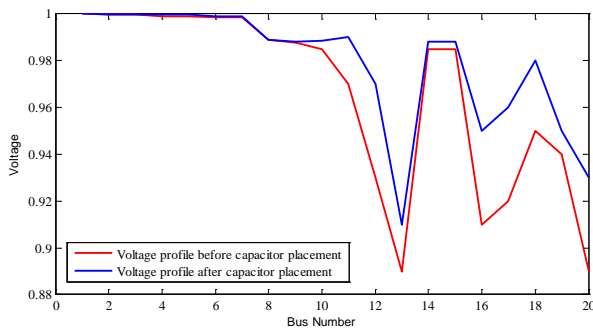


Fig 4: Voltage profile of 20 bus system before and after capacitor placement

7. Conclusion

In the present paper, a new population based artificial in the present paper, a new population based artificial bee colony algorithm (ABC) has been proposed to solve capacitor placement problem and quantifying the total line loss reduction in distribution system. Simulations are carried on actual power network of Kerman Province, Iran. The simulation results show that the inclusion of capacitor, marginally reduce the losses in a distribution system. This is because; the line losses form only a minor part of the distribution system losses and the capacitor can reduce only the line losses. The other losses viz. the transformer losses and the LV side distribution losses remain unaltered. Hence this fact should be considered before installing a capacitor into a system. The results obtained by the proposed method outperform the other methods in terms of quality of the solution and computation efficiency.

References

- 1- C. Lyra, C. Pissara, C. Cavellucci, A. Mendes, P. M. Franca(2005), "Capacitor placement in largesized radial distribution networks, replacement and sizing of capacitor banks in distorted distribution networks by genetic algorithms", *IEE Proceedings Generation, Transmission & Distribution*, pp. 498-516.
- 2- Ng H.N., Salama M.M.A. and Chikhani A.Y(2000), "Capacitor allocation by approximate reasoning: fuzzy capacitor placement", *IEEE Transactions on Power Delivery*, vol. 15, No. 1, pp. 393-398.
- 3- Sundharajan and A. Pahwa(1994), "Optimal selection of capacitors for radial distribution systems using genetic algorithm", *IEEE Trans. Power Systems*, vol. 9, No.3, pp.1499-1507.
- 4- Ji-Pyng Chiou et al(2006), "Capacitor placement in large scale distribution system using variable scaling hybrid differential evolution", *Electric Power and Energy Systems*, vol. 28, pp.739-745.
- 5- J. J. Grainger, S. H. Lee (1981), "Optimum size and location of shunt capacitors for reduction of losses on distribution feeders", *IEEE Trans Power Apparatus Systems*, vol. 100, pp. 1105-1108.
- 6- Turan Gonen, *Electric power Distribution systems Engineering*, Mc.Graw-Hill International Edition,1986.

- 7- Mahdi Mozaffari Legha, Rouhollah Abdollahzadeh Sangrood, Ardalan Zargar Raeiszadeh, Mohammad Mozaffari Legha,, "CONDUCTOR SIZE SELECTION IN PLANNING OF RADIAL DISTRIBUTION SYSTEMS FOR PRODUCTIVITY IMPROVEMENT USING IMPERIALIST COMPETITIVE ALGORITHM", *International Journal on Technical and Physical Problems of Engineering (IJTPE)*, Issue 15, Vol. 5, No. 2, pp. 65-69, June 2013
- 8- J. L. Bala, P. A. Kuntz, M. Taylor(1995), "Sensitivity-based optimal capacitor placement on a radial distribution feeder", *Proc. Northcon 95, IEEE Technical Application Conf.*, pp. 225230.
- 9- B. Basturk, D. Karaboga(2006), "An artificial bee colony (ABC) algorithm for numeric function optimization", *IEEE Swarm Intelligence Symposium 2006*, May 12-14, Indianapolis, IN, USA.
- 10- D. Karaboga, B. Basturk(2007), "A powerful and efficient algorithm for numerical function optimization: artificial bee colony (ABC) algorithm", *Journal of Global Optimization*, vol. 39, pp. 459-471.
- 11- D. Karaboga, B. Basturk(2008), "On the performance of artificial bee colony (ABC) algorithm", *Applied Soft Computing*, vol. 8 pp. 687-697.
- 12- Baran ME, Wu FF (1989), "Optimal sizing of capacitors placed on a radial distribution systems", *IEEE Trans Power Deliver*, vol. 4, pp. 735-43.
- 13- Prakash K. and Sydulu M (2007), "Particle swarm optimization based capacitor placement on radial distribution systems", *IEEE Power Engineering Society general meeting 2007*, pp. 1-5.
- 14- S. F. Mekhamer et al (2002), "New heuristic strategies for reactive power compensation of radial distribution feeders", *IEEE Trans Power Delivery*, vol. 17, No. 4, pp.1128-1135.
- 15- D. Das(2002), "Reactive power compensation for radial distribution networks using genetic algorithms", *Electric Power and Energy Systems*, vol. 24, pp.573-581.
- 16- K. S. Swarup (2005),"Genetic Algorithm for optimal capacitor allocation in radial distribution systems",*Proceedings of the 6th WSEAS Int. Conf. on EVOLUTIONARY COMPUTING*, Lisbon, Portugal, June 16-18, pp152-159.
- 17- M.Chis, M. M. A. Salama and S. Jayaram(1997), "Capacitor Placement in distribution system using heuristic search strategies," *IEE Proc-Gener, Transm, Distrib*, vol, 144, No.3, pp. 225-230.
- 18- Das et al (1995), "Simple and efficient method for load flow solution of radial distribution network," *Electric Power and Energy Systems*, vol. 17, No.5, pp.335-346.
- 19- H.N.Ng, M.M.A. Salama and A.Y.Chikhani(2000), "Capacitor Allocation by Approximate Reasoning: Fuzzy Capacitor Placement," *IEEE Trans.Power Delivery*, vol. 15, no.1, pp. 393-398.
- 20- S. H. Lee, J. J. Grainger (1981), "Optimum placement of fixed and switched capacitors on primary distribution feeders", *IEEE Trans PAS*, vol. 100,pp. 345-352.
- 21- Baghzouz. Y and Ertem S(1990), "Shunt capacitor sizing for radial distribution feeders with distorted substation voltages", *IEEE Trans Power Delivery*,vol. 5, pp.650-57.